

# JS12-24

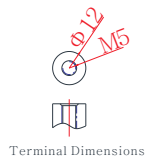
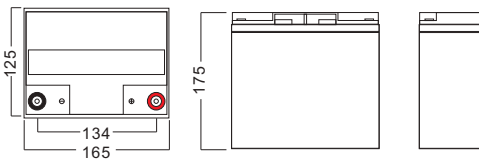


## General Features

- High corrosion resistant performance: Pb-Ca multi-alloy grid
- High energy density and power density
- Optimized capability of instant high-current discharging
- Excellent charge acceptance ability
- Excellent deep cycle discharge capability
- Strong high and low temperature performance
- Precision sealing technology



Dimension: 165(L)×125(W)×175(H)×175(TH) Unit: mm



## JS Series lead-acid battery

### Applications

- UPS/EPS
- Power systems
- Telecommunications system
- Emergency lighting、Auto control system
- Solar/wind generating storage cyclic
- Other general purpose

### Specification

Nominal Voltage	12V
Nominal Capacity	24.0Ah
Design life	5 years
Terminal	M5
Approx. Weight	Approx7.50kg (16.5lbs)
Container Material	ABS
Rated Capacity	<b>24.0Ah</b> 20Hour Rate (1.20A to 10.5V)
	<b>18.7Ah</b> 3Hour Rate (6.22A to 10.5V)
	<b>15.8Ah</b> 1Hour Rate (15.8A to 9.60V)
Internal resistance	Full charged at 25°C: 16.0 mΩ
Max. Discharge Current	360A(5S)
Operating Temperature	Discharge: -20 ~50°C(-4~ 122°F)
	Charge: -20 ~50°C(-4~ 122°F)
	Storage: -20 ~50°C(-4~ 122°F)
Charge current:	Max.6.00A ; Recom.2.40A
Charge Method (25 °C)	Float Charge:13.5-13.8V,recom.13.5V(-18mV/ °C)
	Equalize charge:13.8-14.1V,recom.14.1V(-24mV/ °C)
	Cycle charge:14.4-15.0V,recom.14.4V(-30mV/ °C)
Self discharge	3% of capacity declined per month at 25°C

### Constant Current Discharge Characteristics Unit: A (25°C, 77°F)

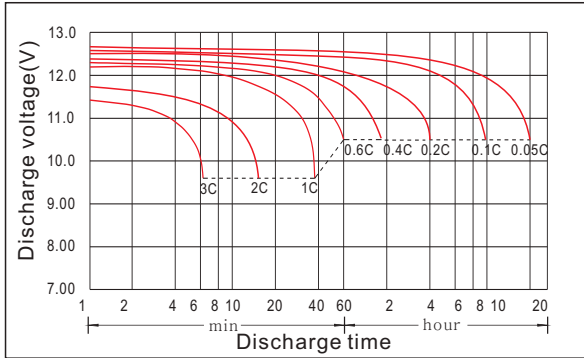
FV/Time	5min	10min	15min	30min	1h	2h	3h	4h	5h	8h	10h	20h
1.60V	95.0	62.2	46.3	30.4	15.8	9.07	6.62	5.30	4.51	2.98	2.38	1.27
1.65V	94.3	59.5	42.5	28.8	14.9	8.71	6.43	5.14	4.42	2.93	2.35	1.25
1.70V	77.3	55.9	39.6	27.9	14.4	8.54	6.31	4.87	4.37	2.88	2.30	1.22
1.75V	71.8	53.3	37.0	27.3	13.9	8.33	6.22	4.80	4.18	2.81	2.26	1.20
1.80V	66.0	50.2	34.3	26.4	13.4	8.11	5.88	4.70	4.01	2.74	2.21	1.15

### Constant Power Discharge Characteristics Unit: W/cell(25°C, 77°F)

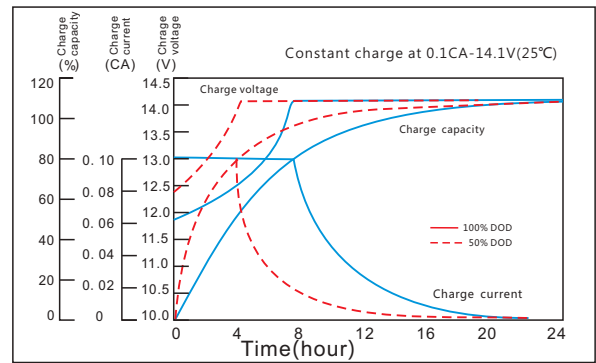
FV/Time	5min	10min	15min	30min	1h	2h	3h	4h	5h	8h	10h	20h
1.60V	178	112	84.8	51.3	29.0	17.0	12.5	10.0	8.52	5.62	4.60	2.52
1.65V	164	106	79.6	50.9	27.3	16.4	12.2	9.72	8.36	5.53	4.52	2.45
1.70V	150	103	76.0	50.8	26.5	16.0	12.0	9.24	8.12	5.48	4.48	2.43
1.75V	136	100	73.2	50.2	25.7	15.7	11.8	9.12	7.96	5.25	4.38	2.38
1.80V	122	96.4	70.0	49.9	25.4	15.6	11.5	9.04	7.76	5.08	4.29	2.36

**JS12-24**

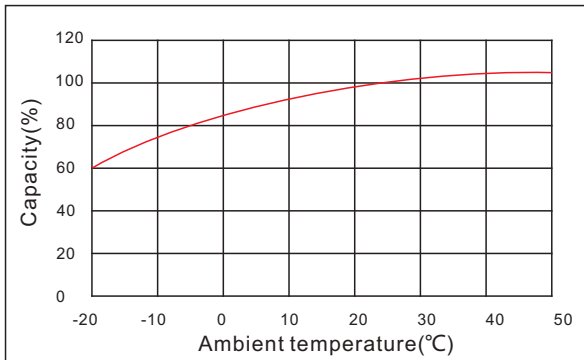
**Discharge characteristic**



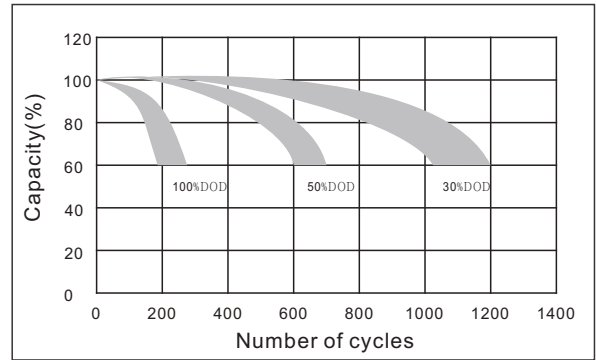
**Charging characteristic**



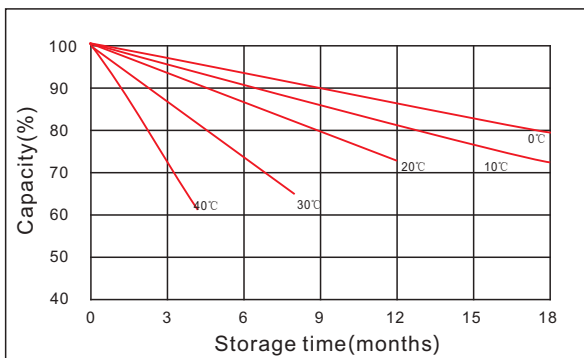
**The effect of temperature on capacity**



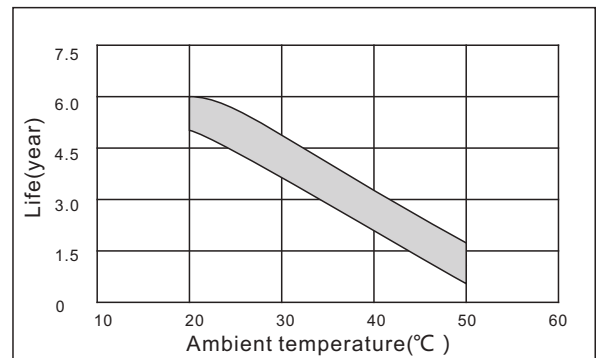
**The effect of discharge depth on cycle life**



**Curves of self-discharge**



**The effect of temperature on float life**



[www.kijo.com.cn](http://www.kijo.com.cn)    [info@kijo.com.cn](mailto:info@kijo.com.cn)

**Jiangxi Jingjiu Power Science&Technology Co. Ltd.**  
Add: 1388 Fushan No.1 Street, Xiaolan Economic Development Zone, Nanchang City, Jiangxi Province, China.

+86-791-85982779    +86-791-85989842

**Jiangxi Jingjiu Power ( Jiujiang ) Co. Ltd.**  
Add: Xiwang Rd, Aicheng Industrial Park, Yongxiu Country, jiujiang City, Jiangxi Province, China.

